

SECTION **PB**
PARKING BRAKE SYSTEM

A
B
C
D
E
PB
G
H
I
J
K
L
M
N
O
P

CONTENTS

SERVICE INFORMATION	2	Commercial Service Tool	4
PRECAUTIONS	2	PARKING BRAKE CONTROL	5
Precaution for Supplemental Restraint System (SRS) "AIR BAG" and "SEAT BELT PRE-TENSIONER"	2	On-Vehicle Service	5
Precaution Necessary for Steering Wheel Rotation After Battery Disconnect	2	Component	6
PREPARATION	4	Removal and Installation	6
		SERVICE DATA AND SPECIFICATIONS (SDS)	8
		Parking Brake Control	8

PRECAUTIONS

< SERVICE INFORMATION >

SERVICE INFORMATION

PRECAUTIONS

Precaution for Supplemental Restraint System (SRS) "AIR BAG" and "SEAT BELT PRE-TENSIONER"

INFOID:000000007329046

The Supplemental Restraint System such as "AIR BAG" and "SEAT BELT PRE-TENSIONER", used along with a front seat belt, helps to reduce the risk or severity of injury to the driver and front passenger for certain types of collision. This system includes seat belt switch inputs and dual stage front air bag modules. The SRS system uses the seat belt switches to determine the front air bag deployment, and may only deploy one front air bag, depending on the severity of a collision and whether the front occupants are belted or unbelted. Information necessary to service the system safely is included in the SRS and SB section of this Service Manual.

WARNING:

- To avoid rendering the SRS inoperative, which could increase the risk of personal injury or death in the event of a collision which would result in air bag inflation, all maintenance must be performed by an authorized NISSAN/INFINITI dealer.
- Improper maintenance, including incorrect removal and installation of the SRS can lead to personal injury caused by unintentional activation of the system. For removal of Spiral Cable and Air Bag Module, see the SRS section.
- Do not use electrical test equipment on any circuit related to the SRS unless instructed to in this Service Manual. SRS wiring harnesses can be identified by yellow and/or orange harnesses or harness connectors.

PRECAUTIONS WHEN USING POWER TOOLS (AIR OR ELECTRIC) AND HAMMERS

WARNING:

- When working near the Airbag Diagnosis Sensor Unit or other Airbag System sensors with the Ignition ON or engine running, DO NOT use air or electric power tools or strike near the sensor(s) with a hammer. Heavy vibration could activate the sensor(s) and deploy the air bag(s), possibly causing serious injury.
- When using air or electric power tools or hammers, always switch the Ignition OFF, disconnect the battery, and wait at least 3 minutes before performing any service.

Precaution Necessary for Steering Wheel Rotation After Battery Disconnect

INFOID:000000007329047

NOTE:

- This Procedure is applied only to models with Intelligent Key system and NATS (NISSAN ANTI-THEFT SYSTEM).
- Remove and install all control units after disconnecting both battery cables with the ignition knob in the "LOCK" position.
- Always use CONSULT to perform self-diagnosis as a part of each function inspection after finishing work. If DTC is detected, perform trouble diagnosis according to self-diagnostic results.

For models equipped with the Intelligent Key system and NATS, an electrically controlled steering lock mechanism is adopted on the key cylinder.

For this reason, if the battery is disconnected or if the battery is discharged, the steering wheel will lock and steering wheel rotation will become impossible.

If steering wheel rotation is required when battery power is interrupted, follow the procedure below before starting the repair operation.

OPERATION PROCEDURE

1. Connect both battery cables.

NOTE:

Supply power using jumper cables if battery is discharged.

2. Use the Intelligent Key or mechanical key to turn the ignition switch to the "ACC" position. At this time, the steering lock will be released.
3. Disconnect both battery cables. The steering lock will remain released and the steering wheel can be rotated.
4. Perform the necessary repair operation.

PRECAUTIONS

< SERVICE INFORMATION >

5. When the repair work is completed, return the ignition switch to the "LOCK" position before connecting the battery cables. (At this time, the steering lock mechanism will engage.)
6. Perform a self-diagnosis check of all control units using CONSULT.

A

B

C

D

E

PB

G

H

I

J

K

L

M

N

O

P

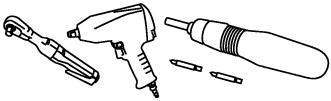
PREPARATION

< SERVICE INFORMATION >

PREPARATION

Commercial Service Tool

INFOID:000000007329048

Tool name	Description
<p data-bbox="162 352 272 380">Power tool</p>  <p data-bbox="862 569 930 588">PIIB1407E</p>	<p data-bbox="1057 352 1390 380">Removing nuts, bolts and screws</p>

PARKING BRAKE CONTROL

< SERVICE INFORMATION >

PARKING BRAKE CONTROL

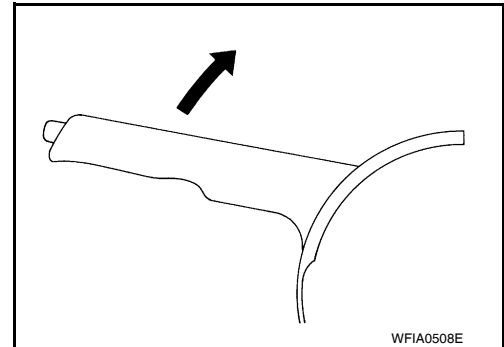
On-Vehicle Service

INFOID:000000007329049

OPERATION

When parking brake lever is operated with a force of 196 N (20 kg-f, 44 lb-f), make sure parking brake lever stroke is within the specified number of notches. (Check it by listening and counting ratchet clicks.)

Number of notches : Refer to [PB-8, "Parking Brake Control"](#).

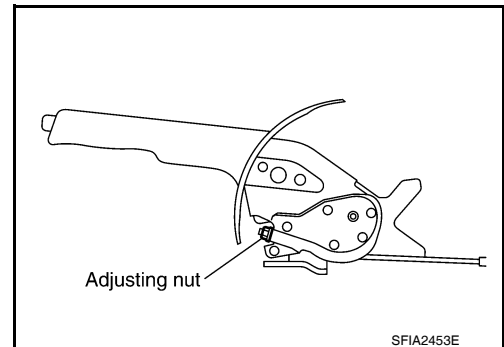


INSPECTION

- Make sure that the mounting conditions (looseness, backlash, etc.) of each component are normal.
- Check the following:
 - Device assembly for bends, damage and cracks. Replace if any damage is noted.
 - Cables and equalizer for wear and damage. Replace if any damage is noted.
 - Parking brake switch. Replace if it does not work correctly.

ADJUSTMENT

1. Remove console mask cover. Refer to [IP-12, "Removal and Installation"](#).
2. Engage parking brake lever, then lift up the end of the trim on the lever to access the adjusting nut.
3. Insert a deep socket wrench onto adjusting nut. Rotate adjusting nut to fully loosen cable, and then release parking brake lever.



4. Depress the foot brake about 10 times and adjust the rear shoe clearance.
CAUTION:
Be sure to securely depress the foot brake.
5. Rotate brake drum to make sure that there is no drag.
6. Adjust parking brake cable with the following procedure.
 - a. When replace parking brake cable, operate parking brake lever with a force of 490 N (50 kg-f, 110 lb-f) about 10 times.
 - b. Engage parking brake lever, then lift up the end of the trim on the lever to access the adjusting nut.
 - c. Rotate adjusting nut to adjust parking brake lever stroke using a deep socket wrench.
 - d. Operate parking brake lever with a force of 196 N (20 kg-f, 44 lb-f), make sure the parking brake lever stroke is within the specified number of notches. (Check it by listening and counting ratchet clicks.)

Number of notches : Refer to [PB-8, "Parking Brake Control"](#).

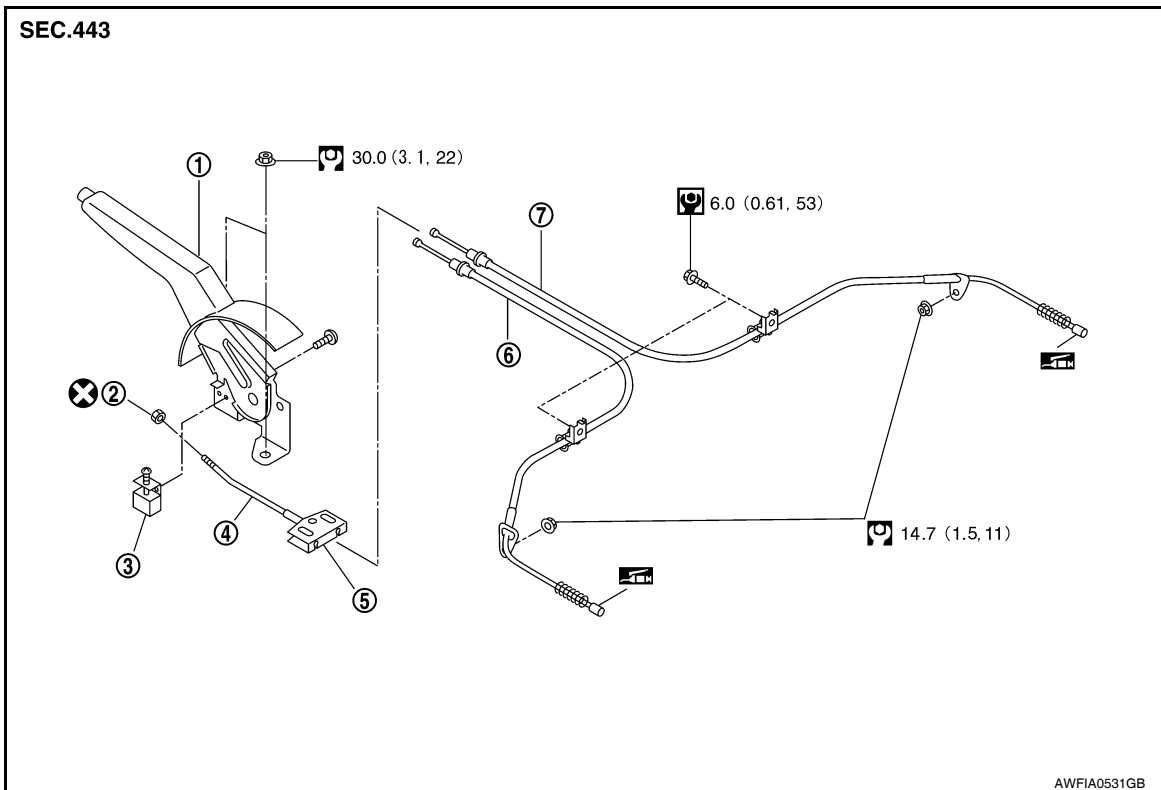
- e. Make sure that there is no drag on rear brake with parking brake lever completely released.
7. Install console mask cover. Refer to [IP-12, "Removal and Installation"](#).

PARKING BRAKE CONTROL

< SERVICE INFORMATION >

Component

INFOID:000000007329050



- | | | |
|--------------------|------------------|-------------------------|
| 1. Device assembly | 2. Adjusting nut | 3. Parking brake switch |
| 4. Front cable | 5. Equalizer | 6. LH rear cable |
| 7. RH rear cable | | |

Removal and Installation

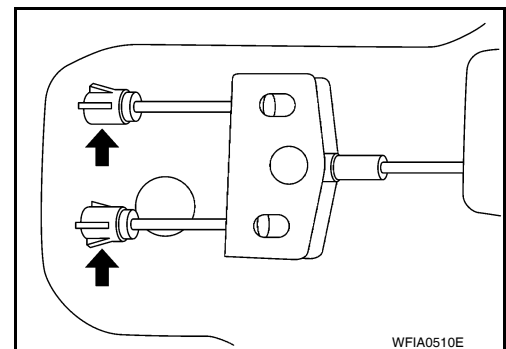
INFOID:000000007329051

REMOVAL

1. Remove center console assembly. Refer to [IP-12, "Removal and Installation"](#).
2. Disconnect parking brake switch connector.
3. Loosen adjusting nut.
4. Remove equalizer from rear cable terminal ends.
5. Take off rear cable clip, and unplug rear cable outward.

NOTE:

Close opening to take off clip.



6. Remove device assembly nuts, and remove device assembly.
7. Remove rear brake shoe and remove rear cable from the operating lever. Refer to [BR-33, "Removal and Installation of Drum Brake Assembly"](#).
8. Remove the center muffler. Refer to [EX-5, "Component"](#).
9. Remove rear cable bolt and nut, and then remove rear cable.

PARKING BRAKE CONTROL

< SERVICE INFORMATION >

10. Remove adjusting nut and discard. Remove the front cable from the device assembly.

CAUTION:

Discard the adjusting nut, do not reuse.

INSTALLATION

Installation is in the reverse order of removal.

CAUTION:

- **Adjust the parking brake. Refer to [PB-5, "On-Vehicle Service"](#).**
- **Adjust clearance of rear brake shoes. Refer to [PB-5, "On-Vehicle Service"](#).**

A

B

C

D

E

PB

G

H

I

J

K

L

M

N

O

P

SERVICE DATA AND SPECIFICATIONS (SDS)

< SERVICE INFORMATION >

SERVICE DATA AND SPECIFICATIONS (SDS)

Parking Brake Control

INFOID:000000007329052

Control type	Hand lever
Number of notches [under a force of 196 N (20 kg-f, 44lb-f)]	8 – 9
Number of notches when brake warning lamp comes on	1